

True believers should try to follow Jesus Christ's example in everything they do.

Draw lines between the stepping stones to spell out verse 6 and read how we are commanded to walk as believers.



START FINISH

W	W	A	L	D	I	D
E	H	T	S	K	S	U
R	V	O	U	A	S	E
C	L	E	M	H	S	J
A	S	T	M	I	N	I
I	M	O	L	I	V	E

Dashed lines connect the following letters: W (row 1, col 1) to E (row 2, col 1) to R (row 3, col 1) to C (row 4, col 1) to A (row 5, col 1) to I (row 6, col 1); E (row 2, col 1) to H (row 2, col 2) to V (row 3, col 2) to L (row 4, col 2) to S (row 5, col 2) to M (row 6, col 2); T (row 2, col 3) to O (row 3, col 3) to E (row 4, col 3) to T (row 5, col 3) to M (row 6, col 3); D (row 1, col 4) to S (row 2, col 4) to U (row 3, col 4) to H (row 4, col 4) to I (row 5, col 4) to V (row 6, col 4); I (row 1, col 5) to K (row 2, col 5) to A (row 3, col 5) to H (row 4, col 5) to N (row 5, col 5) to I (row 6, col 5); D (row 1, col 6) to S (row 2, col 6) to S (row 3, col 6) to S (row 4, col 6) to N (row 5, col 6) to V (row 6, col 6); U (row 2, col 7) to E (row 3, col 7) to J (row 4, col 7) to I (row 5, col 7) to E (row 6, col 7).

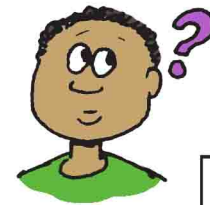
Ages 7+

August 30, 2020 • 1 John 2:1-6

# Walk As Jesus Did

John wrote a letter to Christians, encouraging us not to sin. Whenever we do sin, however, who will speak to God on our behalf?

Following the path through the cross, draw divisions between letters to form words. Then read the message.



↓

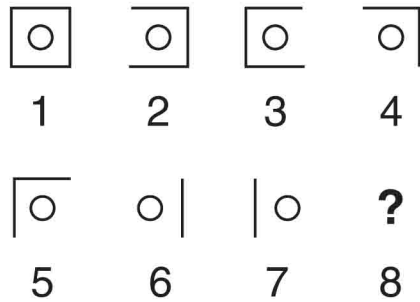
	I	S	U	O					
	F	A	T	E					
O	Y	N	A	F	H	T	H	G	I
N	O	T	H	E	E	T	H	E	R
E	T	S	K	A	R	T	S	I	R
S	I	N	S	E	I	U	S	C	H
	W	P	N	S					
	E	S	O	E					
	H	O	U	J					
	A	H	R	E					
	V	W	D	S					
	E	E	E	N					
	O	N	F	E					



*Joyful & Alive in Christ!*  
**northminster**  
 PRESBYTERIAN CHURCH  
 2450 E. Ft Lowell @ Tucson Blvd. • Tucson, AZ • 85719 • (520) 327-7121  
[www.npctucson.org](http://www.npctucson.org)

## What really demonstrates that we know and love the Lord Jesus?

Circle the symbol that should be the 8th symbol in the series. The symbol shows which action truly demonstrates our belief.



If we tell everyone how religious we are.

If we go to church every Sunday.

If we carry our Bible to school with us.

If we wear Scripture t-shirts or jewelry.

If we obey Christ's commands.

If we look very solemn and wise.

If we give lots of money to the poor.

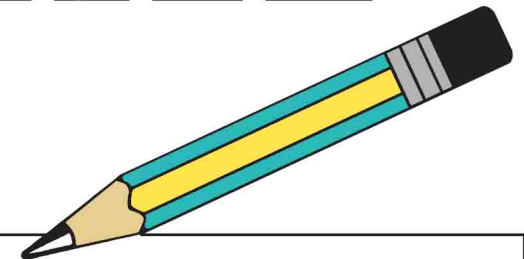
If we volunteer our time at a soup kitchen.

## The things people do speak louder than the things they say.

Find and circle the phrases that are underlined.



The person who says,  
"I know Him," but does not do  
what He commands is a liar,  
 and the truth is not in Him.



I	W	T	R	I	S	M	W	O	T
S	K	O	H	U	Y	H	A	S	H
A	A	N	B	D	A	T	N	E	E
L	E	S	O	T	S	U	D	O	P
I	P	I	H	W	O	R	T	D	E
A	S	E	N	P	H	T	H	T	R
R	B	U	S	H	W	I	E	U	S
N	O	T	D	O	I	K	M	B	O
L	S	D	N	A	M	M	O	C	N